

INSTRUCTIONS FOR USE

This is the Graduate Profile slide deck template. There is a section for you to build your Graduate Profile **portfolio** and a separate section to prepare for your **showcase** slides .

Edit each slide with details and visuals that pertain to you.

Visit these sites to find creative templates to create a visually-appealing slide deck.

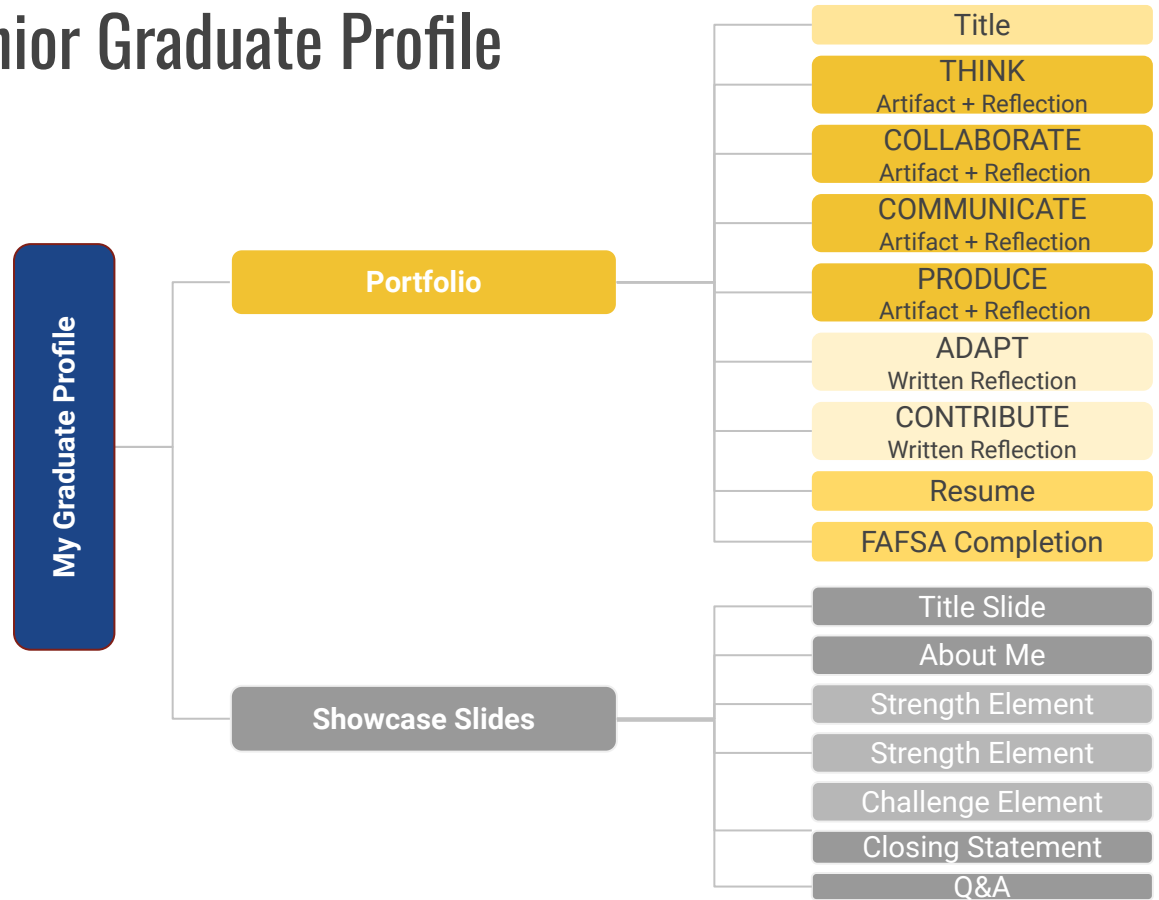
-<https://www.slidescarnival.com/>

-<https://slidesgo.com/>

NOTE: You will use the same template for all 4 years of high school, be sure to name and place it somewhere easily accessible

Components of the Senior Graduate Profile

- You will add artifacts to your portfolio throughout high school and will choose the best one from each element to include in the final draft
- Adapt, Contribute, Resume, and FAFSA completion will be done your senior year
- You will add to and revise your showcase each year based on new evidence from your portfolio



The following section is for your **portfolio**. Use this section to add artifacts and reflections for the six Graduate Profile Elements.

Remember that artifacts...

- ...are graded work samples from high school with a grade of “C” or better. They can include photos, screenshots, videos, audio recordings, etc.
- ...should mostly come from grades 11 and 12 and be from at least three different courses, covering the groups below:
 - Group 1: English Language Arts, Social Studies
 - Group 2: Math, Science
 - Group 3: Career Technical, Visual/Performing Arts, World Languages, Physical Education, or General Electives
- ...must be from a different project or assignment, and no artifact can be used for more than one portfolio item.
- ...should show your individual work. If using group work, highlight your contribution.
- ...needs a statement explaining the context and a reflection on how it demonstrates the skills related to the Graduate Profile Elements.



STUDENT PORTFOLIO

THINK

ADD AN IMAGE OF YOUR **THINK** ARTIFACT AND
WRITE A REFLECTION.

ADD AN IMAGE OF YOUR **COMMUNICATE**
ARTIFACT AND A REFLECTION

COLLABORATE

ADD AN IMAGE OF YOUR **COLLABORATE**
ARTIFACT AND A REFLECTION.

PRODUCE

ADD AN IMAGE OF YOUR **PRODUCE** ARTIFACT
AND A REFLECTION.

ADAPT

PROVIDE A WRITTEN REFLECTION THAT
DESCRIBES A SITUATION WHERE YOU HAD TO
ADAPT TO A CHALLENGE.

CONTRIBUTE

PROVIDE A WRITTEN REFLECTION ABOUT HOW YOU **CONTRIBUTE** THROUGH PARTICIPATION IN COMMUNITY SERVICE, JOB, INTERNSHIP, OR OTHER WAY YOU HAVE HELPED OUT YOUR FAMILY, SCHOOL, OR COMMUNITY.

RESUME

INCLUDE A LINK AND PDF OF YOUR RESUME

INCLUDE EVIDENCE OF HAVING COMPLETED
THE FAFSA APPLICATION OR THE OPT-OUT
FORM

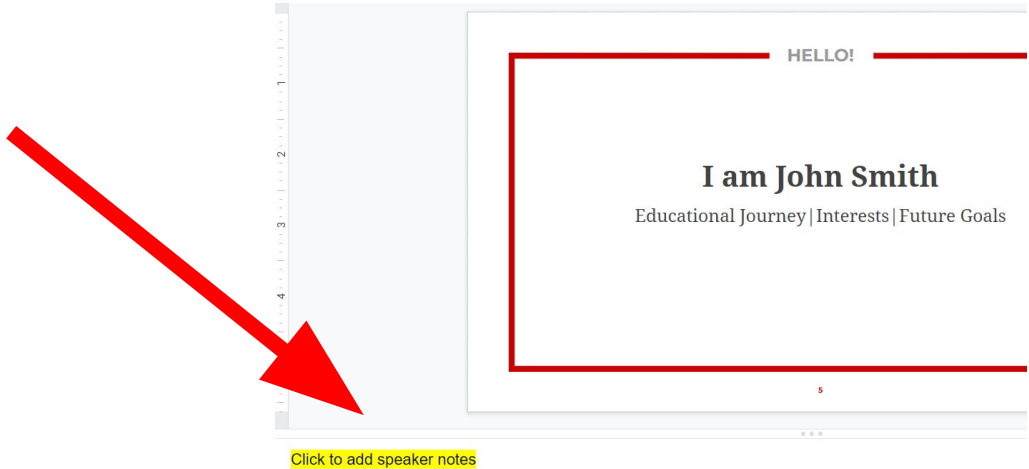


END OF PORTFOLIO SECTION

INSTRUCTIONS FOR USE

The following section is for your **showcase**. Use this section to prepare the slides that you will present before the panel during your presentation.

Using the **speaker notes area below**, write any notes that will help you explain how this artifact demonstrates your learning and how it relates to Think, Communicate, Collaborate, or Produce.





SHOWCASE PRESENTATION

First and Last Name

Class of 202__

*Add pictures
that
represent you
and are
school
appropriate*

Add bullet point details about at least two of the following that apply to you:

- Your life (could include details about your family or important life experiences)
- Hobbies and skills
- Educational journey including extracurriculars
- Future goals

Strength Element

Choose a Graduate Profile Element that highlights one of your strengths.

Using artifacts and learning experiences from high school classes, explain how you used the skills of the element and why this element is a strength.

Using the speaker notes area below, write any notes that will help you explain how your skills in this element prove it is a strength.

Strength Element

Choose a Graduate Profile Element that highlights one of your strengths.

Using artifacts and learning experiences from high school classes, explain how you used the skills of the element and why this element is a strength.

Using the speaker notes area below, write any notes that will help you explain how your skills in this element prove it is a strength.

Challenge Element

Choose a Graduate Profile Element that is still a challenge for you.

Using artifacts and learning experiences from high school classes, explain *which skills you are still working on and which skills you have improved on* as it relates to this element.

Using the speaker notes area below, write any notes that will help you explain how your skills in this element prove it is a strength.

Closing Statement

Explain your plans after high school and how you will use the elements in the Graduate Profile in your life after graduation.



Thank you!

Q & A



END OF SHOWCASE SECTION